

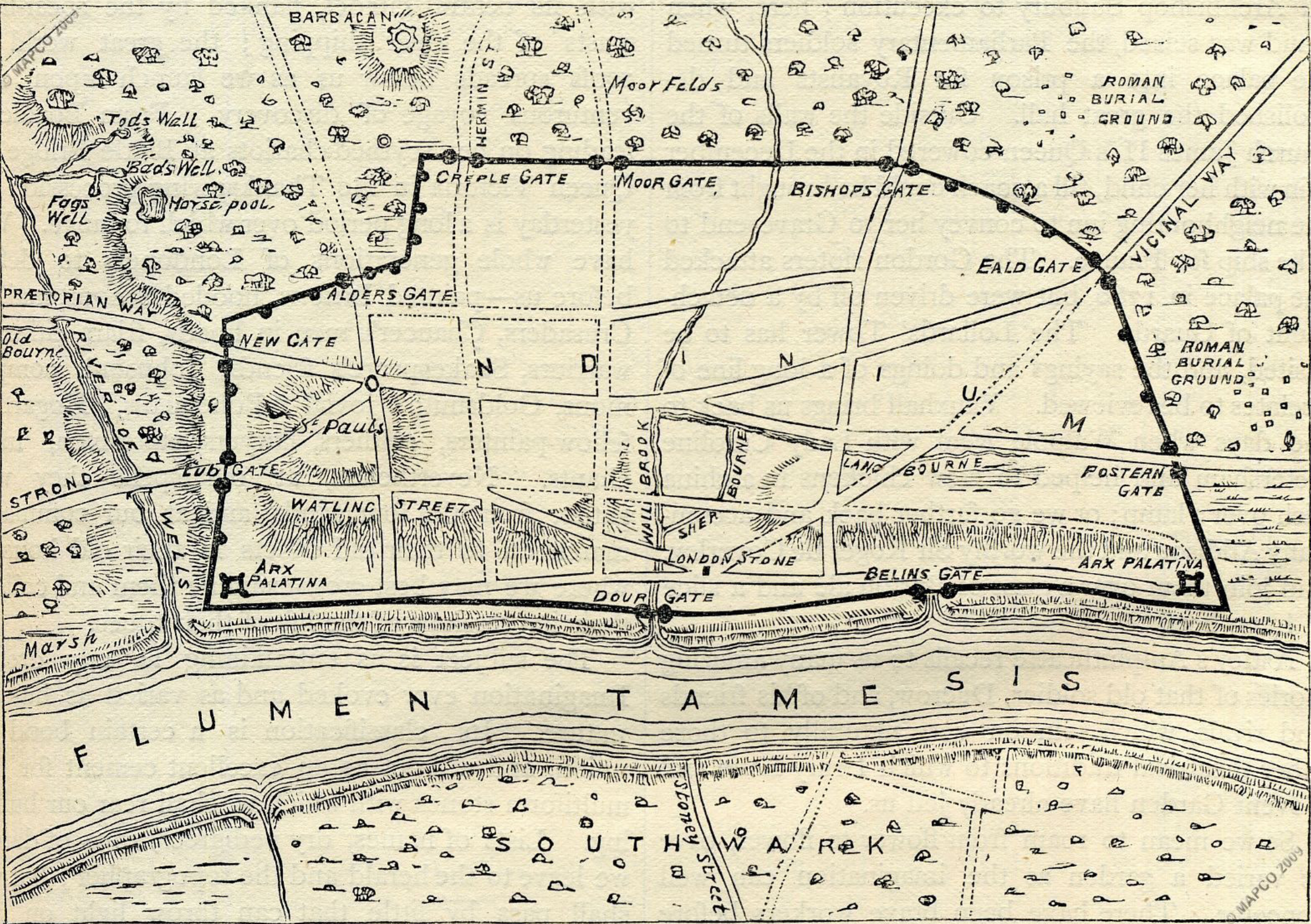
NY-LON SOUTERRAINE



Elizabeth Reynolds, Urban

Projet National VILLE10D – VILLE D'IDEES, Mardi 2 février 2016





BARBACAN

Moor Fields

ROMAN BURIAL GROUND

CREPLE GATE

MOOR GATE

BISHOPS GATE

EALD GATE

VICINAL WAY

ROMAN BURIAL GROUND

NEW GATE

LONDON

S. Pauls

LUB GATE

MALL BROT

SHER BOURNE

LAND BOURNE

POSTERN GATE

PRÆTORIAN WAY

STROND

WATLING STREET

STREET

LONDON STONE

BELINS GATE

ARX PALATINA

ARX PALATINA

DOUR GATE

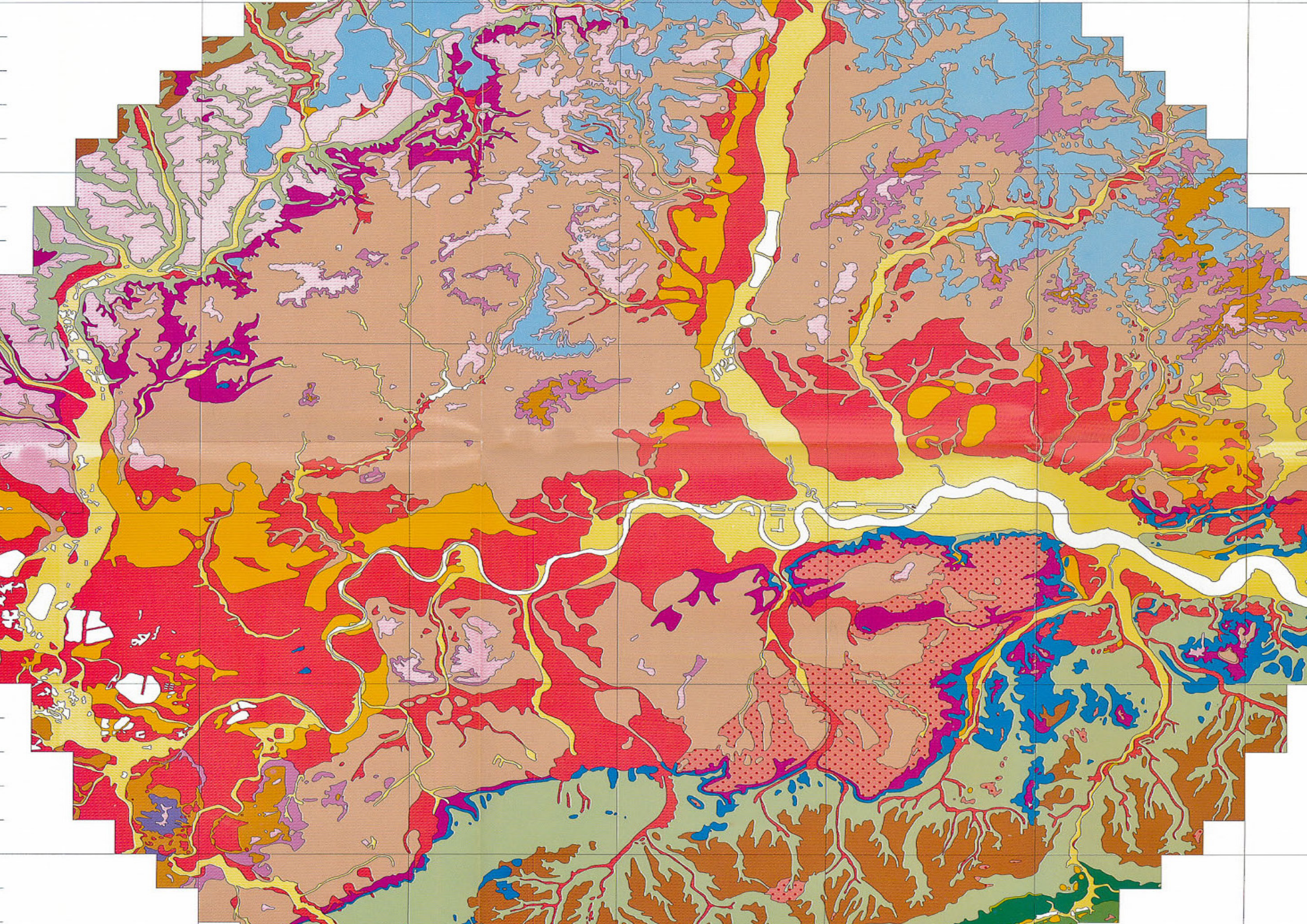
Marsh

FLUMEN TAMEISIS

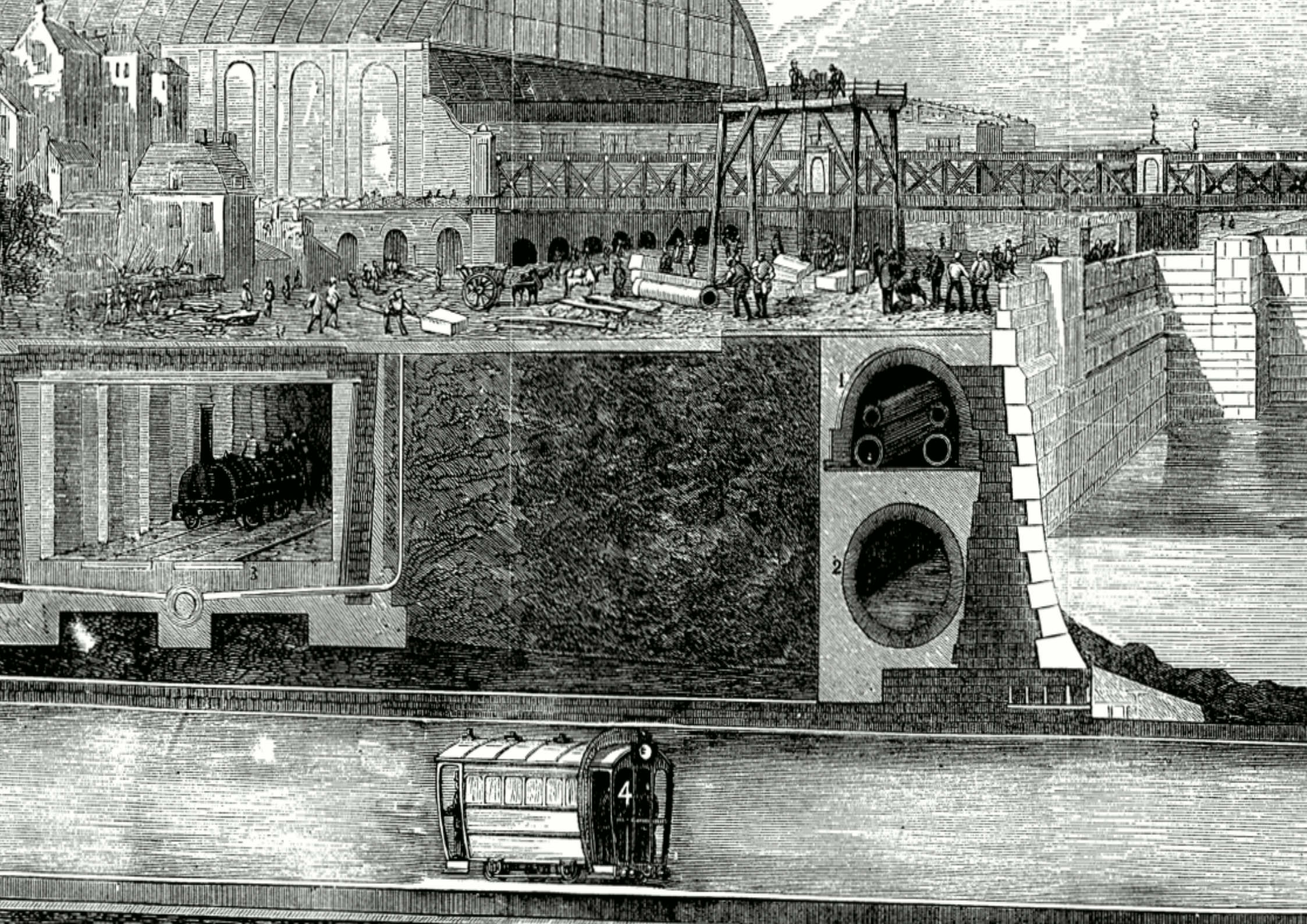
SOUTH WA ROK

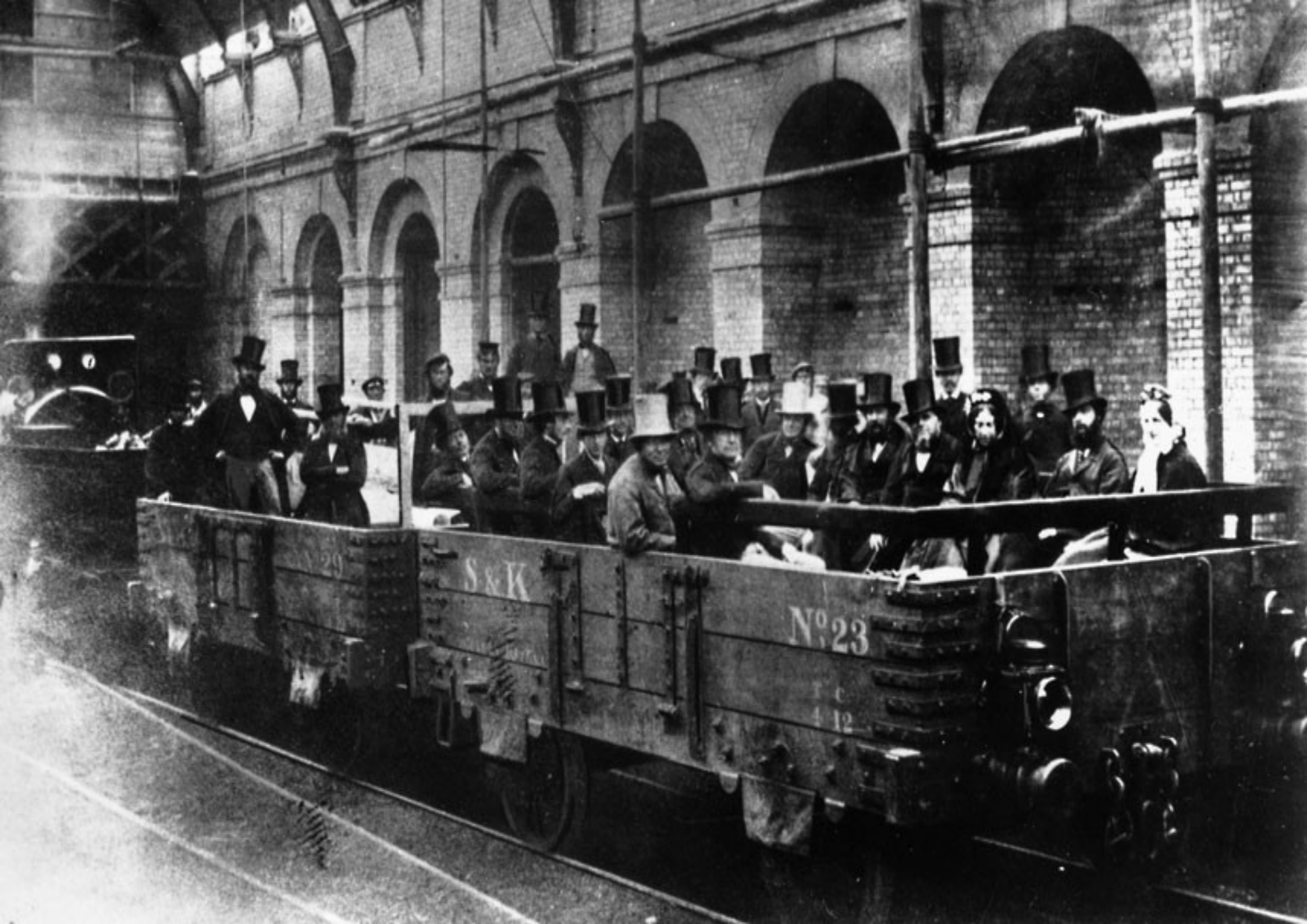
Stoney Street

MAPCO 2009







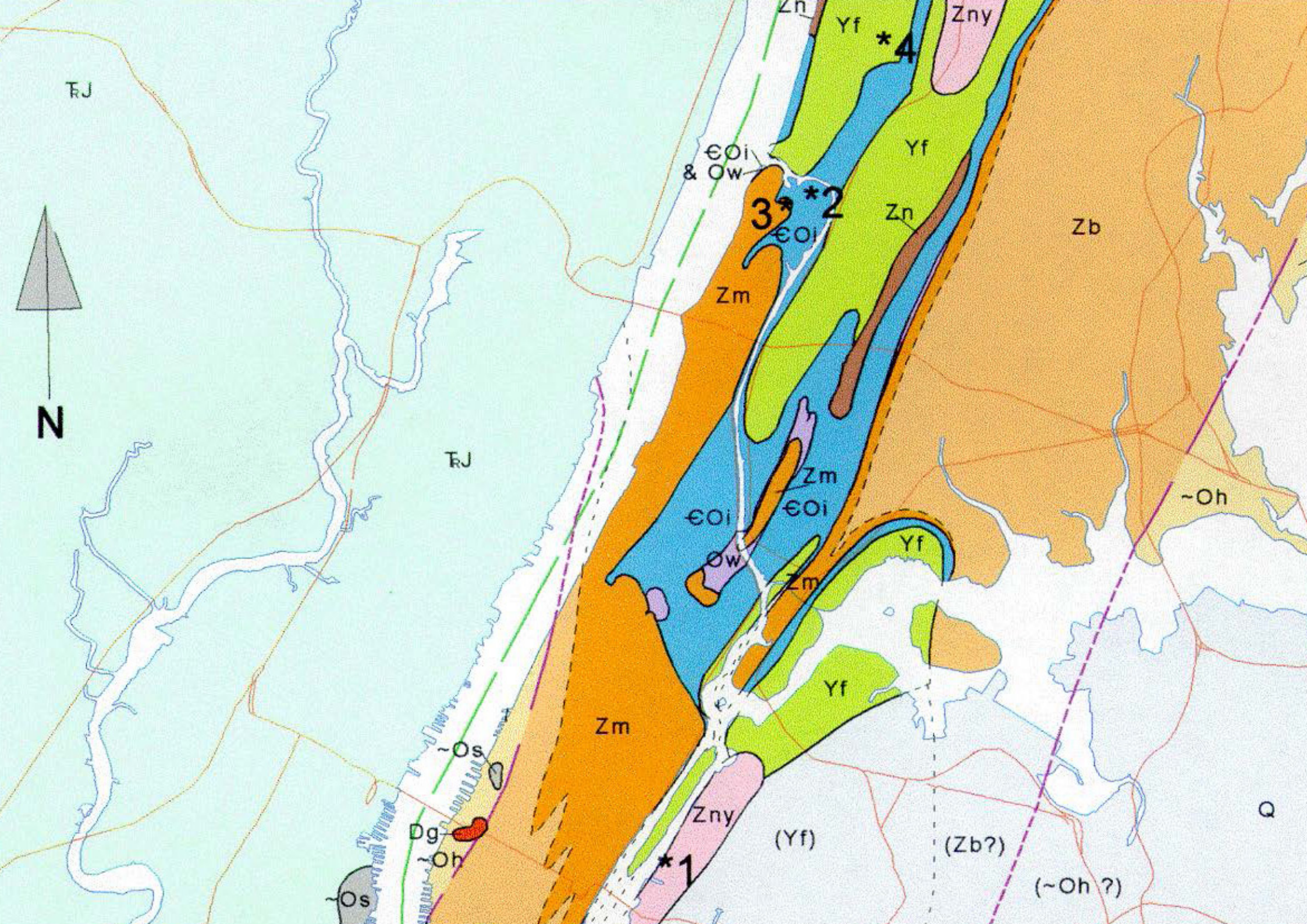




REDRAFT
of
THE CASTELLOPLAN
NEW AMSTERDAM
in
1660

JOHN WOLFF-GRAMS
150 TRUSS STONES
1916





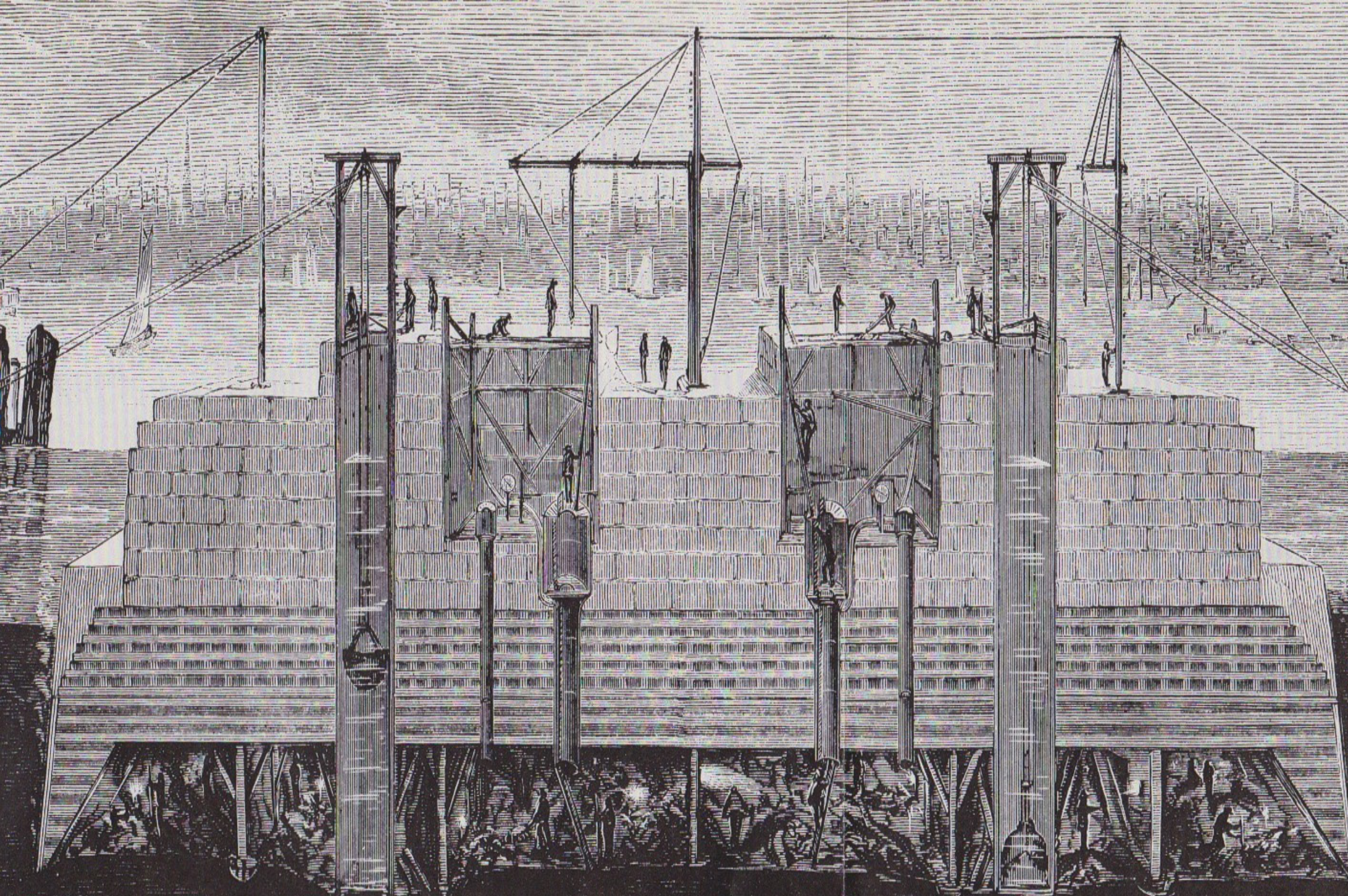


INTER
RATTLED

TRAINS
RUN AT
THE CO'S
CONVENIENCE

BOROUGH
TRANSIT

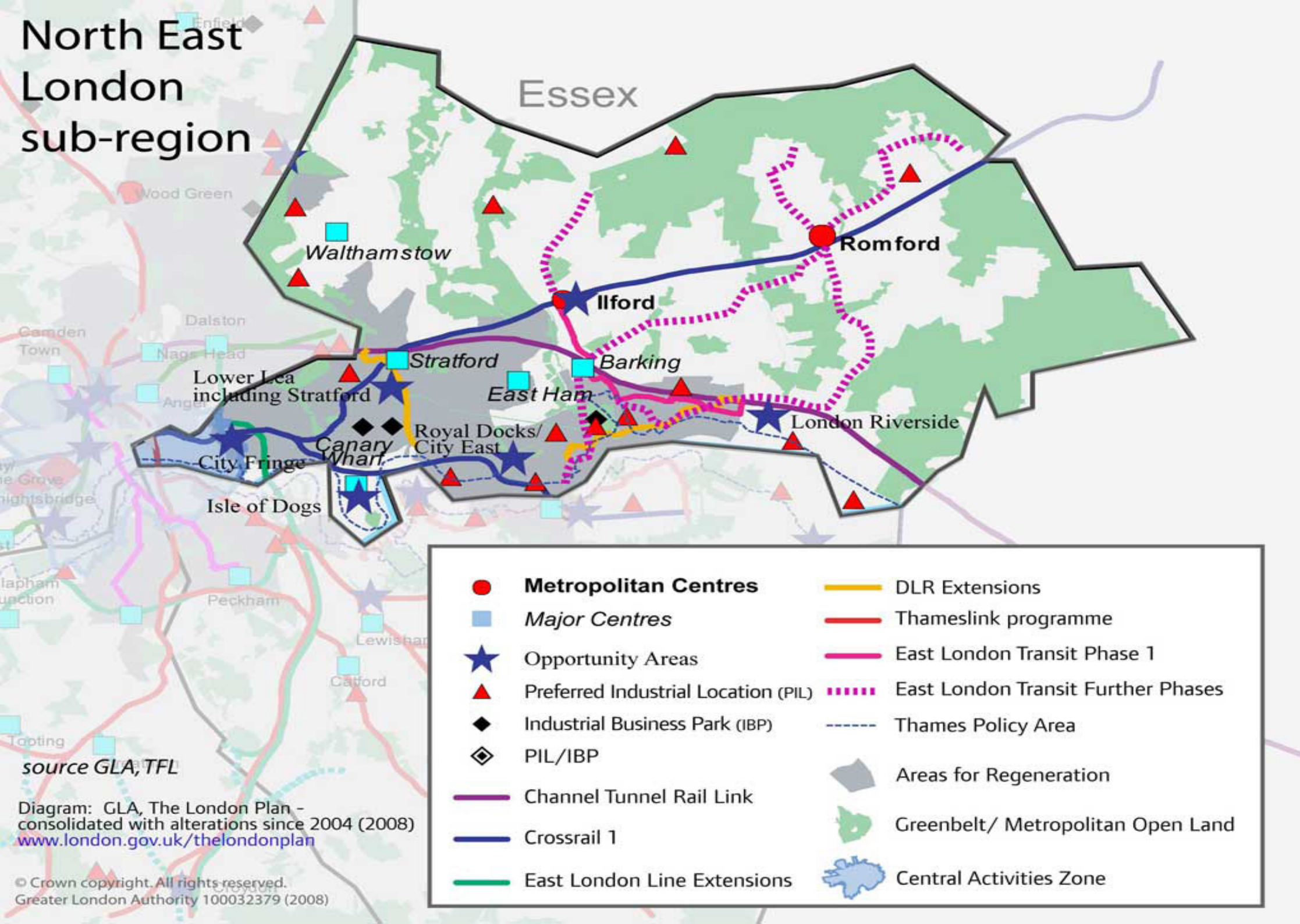
THREE HOURS
TO
HARLEM



FOUNDATION LINE

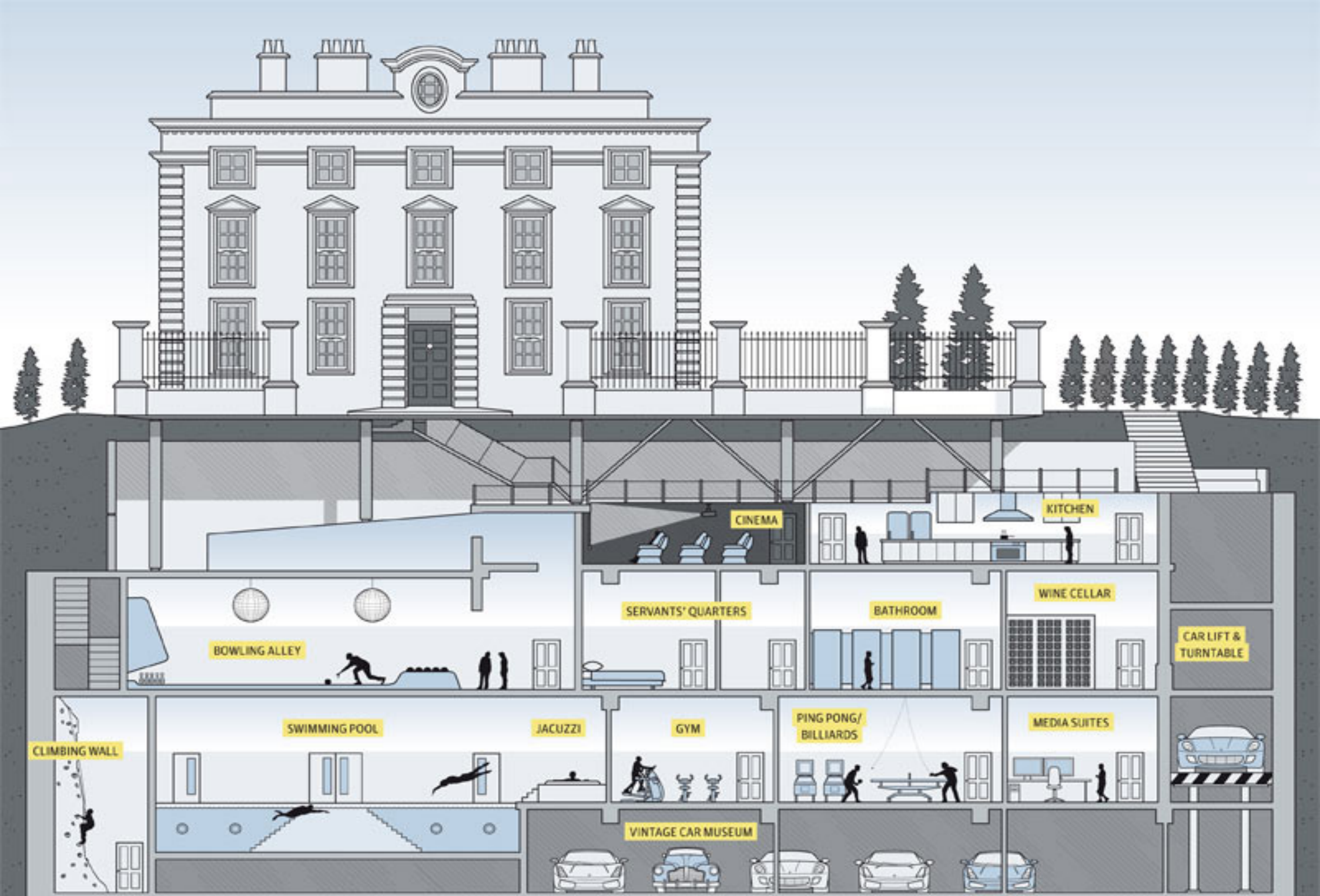


North East London sub-region



source GLA, TFL

Diagram: GLA, The London Plan - consolidated with alterations since 2004 (2008) www.london.gov.uk/thelondonplan



BOWLING ALLEY

SWIMMING POOL

JACUZZI

GYM

PING PONG/
BILLIARDS

MEDIA SUITES

VINTAGE CAR MUSEUM

CINEMA

KITCHEN

SERVANTS' QUARTERS

BATHROOM

WINE CELLAR

CAR LIFT &
TURNTABLE

CLIMBING WALL

LONGEST

HS2 (phase one - London)

The first 48km phase of the proposed High Speed 2 rail link would involve tunnelling in Ealing, Northolt and Ruislip, west London. HS2 said the tunnel would cut its construction timetable by 15 months and reduce disruption to residents and traffic at Hanger Lane. If approved by parliament, HS2 will become Britain's biggest infrastructure project.

2017-2026*
 48km
 £17.2bn

Post Office railway

An underground railway opened in 1927 to shuttle millions of items of post across the capital avoiding London's congestion. The railway has been closed for a decade. Now plans are afoot to open it up to the public. The British Postal Museum and Archive is aiming to raise £2m this year to turn the railway into a tourist attraction, complete with train rides.

n.a.
 37km
 n.a.

Crossrail

Europe's biggest construction project and the first new underground line in decades will stretch from commuter heartland in Maidenhead to another commuter town, Shenfield in Essex, stopping en route at Heathrow, Tottenham Court Road and Canary Wharf. The earth excavated is being shipped to Wallasea Island in Essex, where it will be used to create a 1,500-acre RSPB nature reserve.

2009-2018
 42km
 £14.8bn

WIDEST

Silvertown Tunnel

A new road tunnel between Silvertown and North Greenwich would relieve congestion at the Blackwall Tunnel, providing an alternative route between the Royal Docks, Isle of Dogs, Lower Lea Valley and Greenwich Peninsula. If approved, it will be an estimated 10 metres wide and will run beneath the cross-river cable car. Some 13,000 new jobs and 24,500 new homes are planned.

By 2021*
 500m
 Unknown approx

DEEPEST

Thames Tideway Tunnel

London's sewer network was built in the 1860s to cater for 4m people - double the size of the population at the time. London's population is now more than twice that and 39m cubic metres of untreated sewage pours into the river Thames each year. This is the problem the 66-metre deep Thames Tideway Tunnel could alleviate.

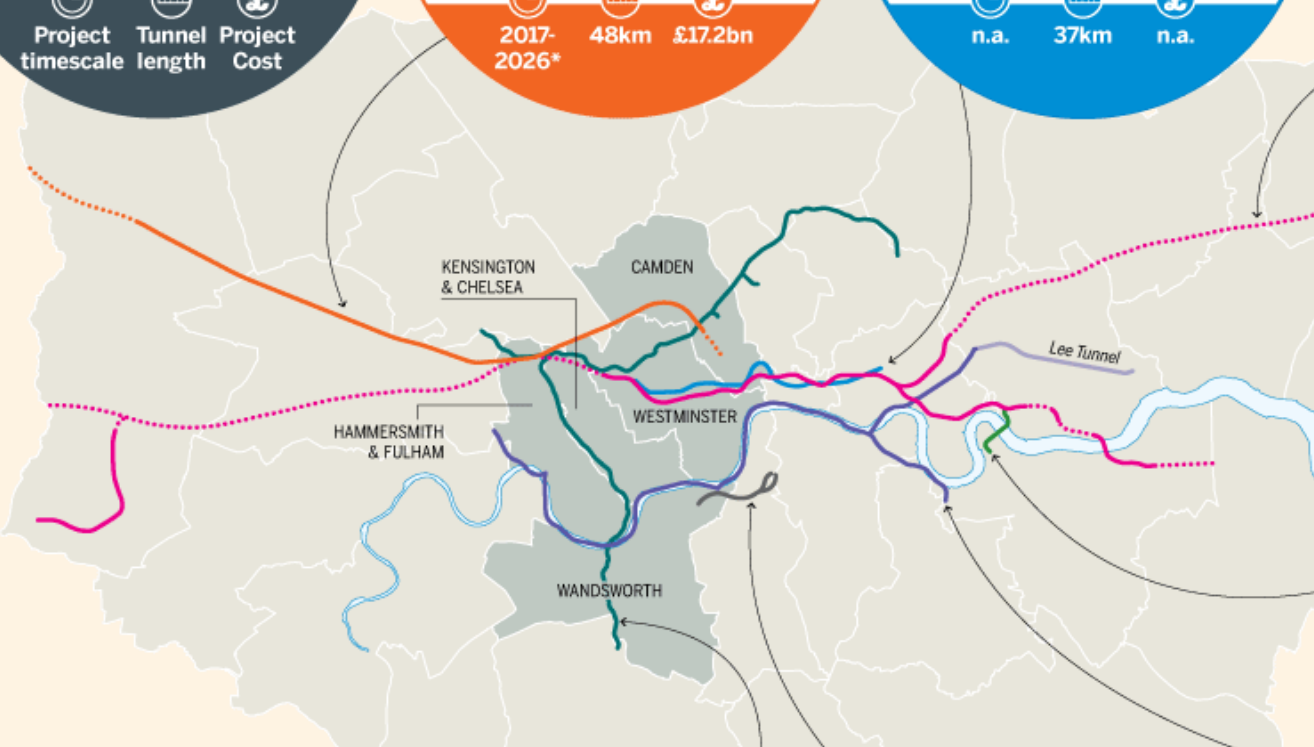
2015-2022*
 25.1km
 £4.1bn

London: Underground

Tunnelling projects across the capital

— Tunnel Surface

Project timescale
 Tunnel length
 Project Cost



Basement digdowns

Number of planning applications involving basements in 2013

- 1,709** Kensington and Chelsea
- 1,405** Westminster
- 754** Camden
- 616** Hammersmith and Fulham
- 579** Wandsworth

London Power Tunnels

Billed as London's electricity superhighway, the London Power Tunnels are replacing 50-year-old cables with new high voltage lines, a substantial increase in capacity that will cater for London's growth over the next couple of decades. A further stage of tunnelling across south and east London is already on the drawing board.

2011-2018
 32km
 £1bn

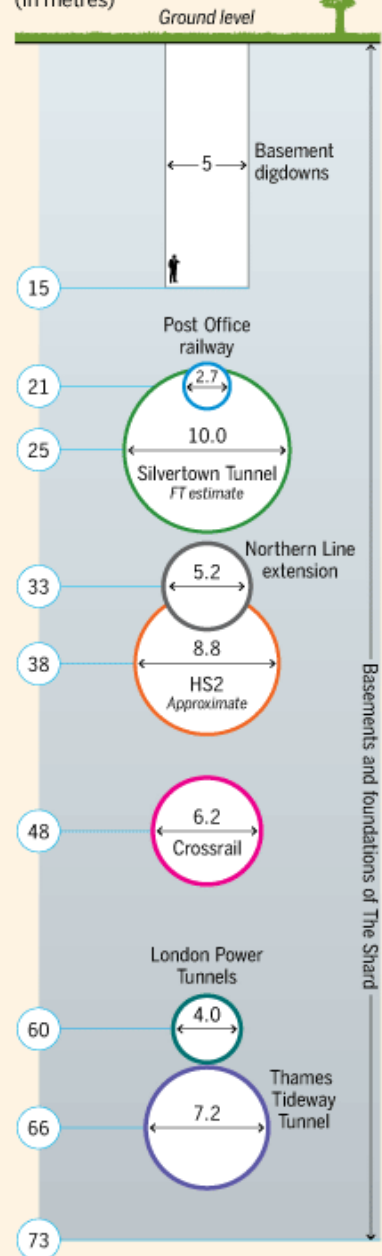
Northern Line extension

Transport for London's latest project is essential infrastructure for the redevelopment of the Nine Elms area on southwest London's riverfront. The extension of London Underground's Northern Line to Battersea is the first addition to the Tube network since the Jubilee Line was extended in 1999.

2015-2020
 3km
 £1bn

How deep?

Relative widths and depths of London's underground tunnelling projects (in metres)



* Project proposed but not yet approved Source: FT research FT graphic: Chris Campbell

PLAN of the CITY of NEW YORK,
 with the recent and intended Improvements. Drawn from
 actual survey by William Bridges, City Surveyor, A.D. 1807.

REFERENCES

- 1 Government House, at the Battery
- 2 Trinity Church, Broad Way
- 3 Grace, do
- 4 St Pauls, do
- 5 St George's Chapel, Beekman Street
- 6 St Marks Church, Steyversant St.
- 7 Christ, do, Ann St.
- 8 St Johns, do, Hudson Square
- 9 Old Dutch, do, Garden Street
- 10 New Dutch, do, Liberty St.
- 11 North, do, William St.
- 12 Calvinist Reformed, Nassau St.
- 13 German Lutheran, Frankfort St.
- 14 English, do, Wall St.
- 15 Baptist Church, Old St.
- 16 do, do, Anthony St.
- 17 do, do, Fayette St.
- 18 Moravian, do, Fair St.
- 19 Scotch Presbit, do, Cedar St.
- 20 do, do, Magazine St.
- 21 Associate, do, Nassau St.
- 22 Presbyterian, do, Wall St.
- 23 do, do, Beekman Street
- 24 do, do, Rutgers St.
- 25 Methodist, do, John St.
- 26 do, do, Second St.
- 27 do, do, Duane St.
- 28 French Church, Pine St.
- 29 St Peters, do, Barclay St.
- 30 Independent, do, Broad Way
- 31 Friends Old Meeting House, Liberty St.
- 32 do, New, do, Pearl Street
- 33 Jews Synagogue, Mill St.
- 34 City Hall, Mill St.
- 35 Oath, do, do
- 36 Drudwell, } opposite the Park
- 37 Alms house, } Chamber St.
- 38 State Prison, } Greenwich
- 39 College, } Robinson St.
- 40 Hospital, } Broad Way
- 41 Library, } Nassau St.
- 42 Arsenal, } Chatham St.
- 43 Theatre, } do
- 44 Exchange, } Markets
- 45 Fly, } do
- 46 Orange, } do
- 47 Bear, } do
- 48 Catherine Slip, } do
- 49 New, } do
- 50 New Court House, } Park
- 51 City Hotel, } Broad Way
- 52 St. Stephens Church, } Broom St.

Fifth Ward

Third Ward

First Ward

Fourth Ward

Second Ward

Ninth Ward

Seventh Ward

EAST

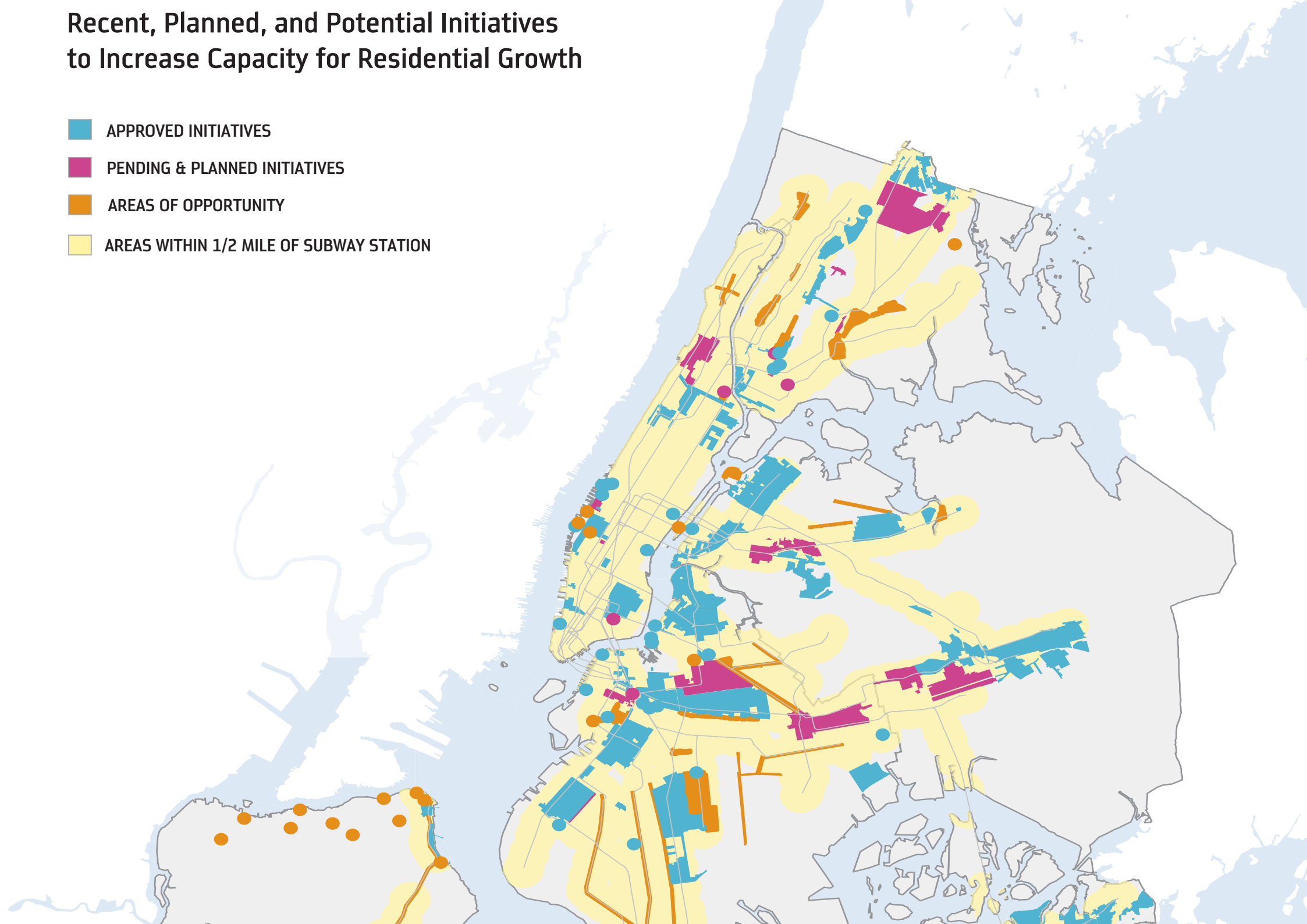
Published by
 ISAAC RILEY
 New York 1807

Engraved by Peter Maverick.



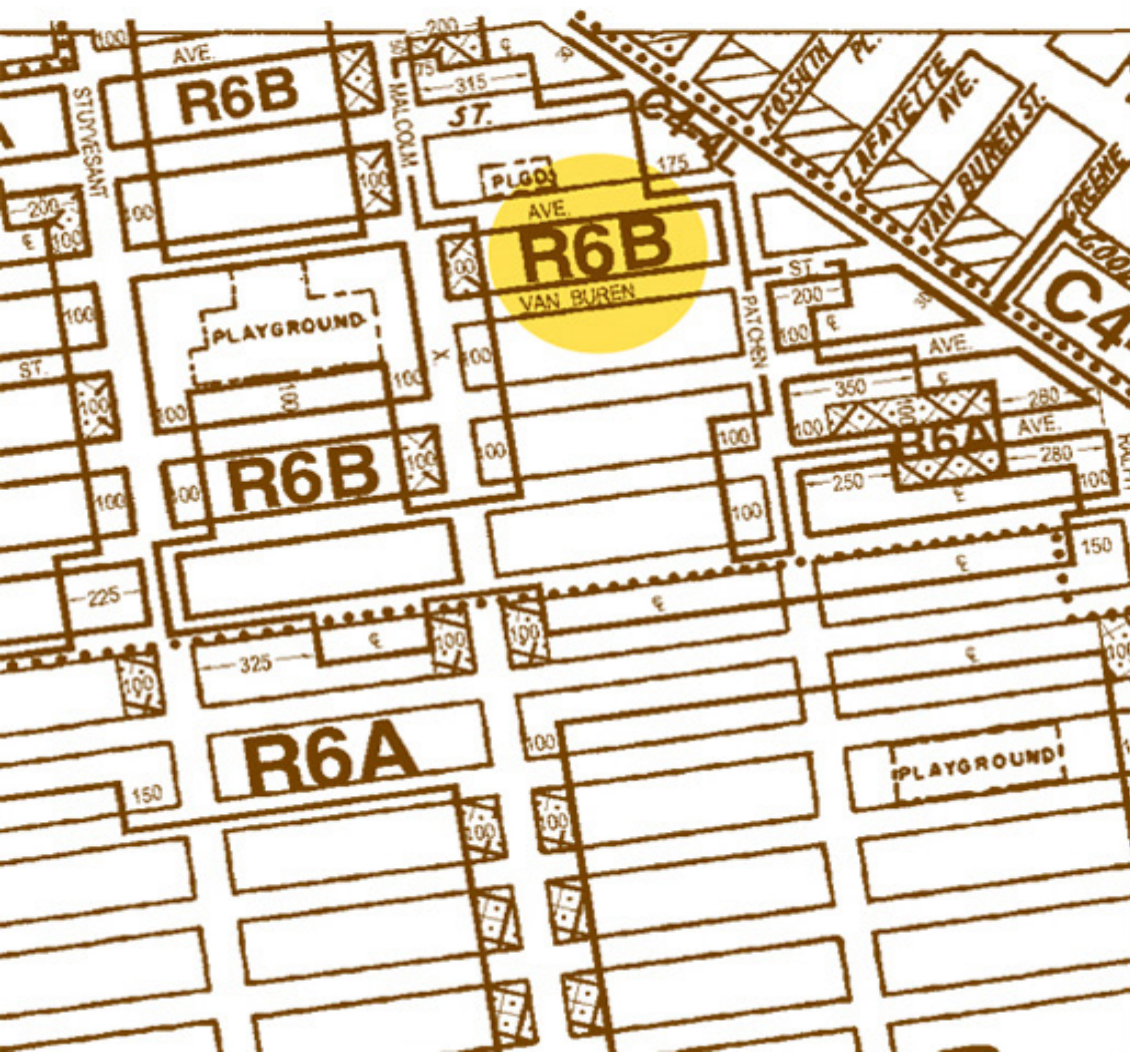
Recent, Planned, and Potential Initiatives to Increase Capacity for Residential Growth

- APPROVED INITIATIVES
- PENDING & PLANNED INITIATIVES
- AREAS OF OPPORTUNITY
- AREAS WITHIN 1/2 MILE OF SUBWAY STATION



What's my zone?

This is what a zoning map looks like. Every block in the city has a zone designation.



Every part of NYC is in a zone. Every zone has a classification that tells you what kind of things can be built in that zone.

R6B

The first character is the land use, or what the buildings in this zone can be used for.

In NYC, it can be:

R = residential

C = commercial

M = manufacturing

MX = "mixed use"

Find out more on page 22.

The second character refers to the scale of development.

For residential, it can be R1 (single family) to R10 (skyscraper).

For commercial, it can be C1 to C8. Smaller numbers usually mean more local-serving businesses, C6 means large corporate headquarters, and C7 means amusement parks!

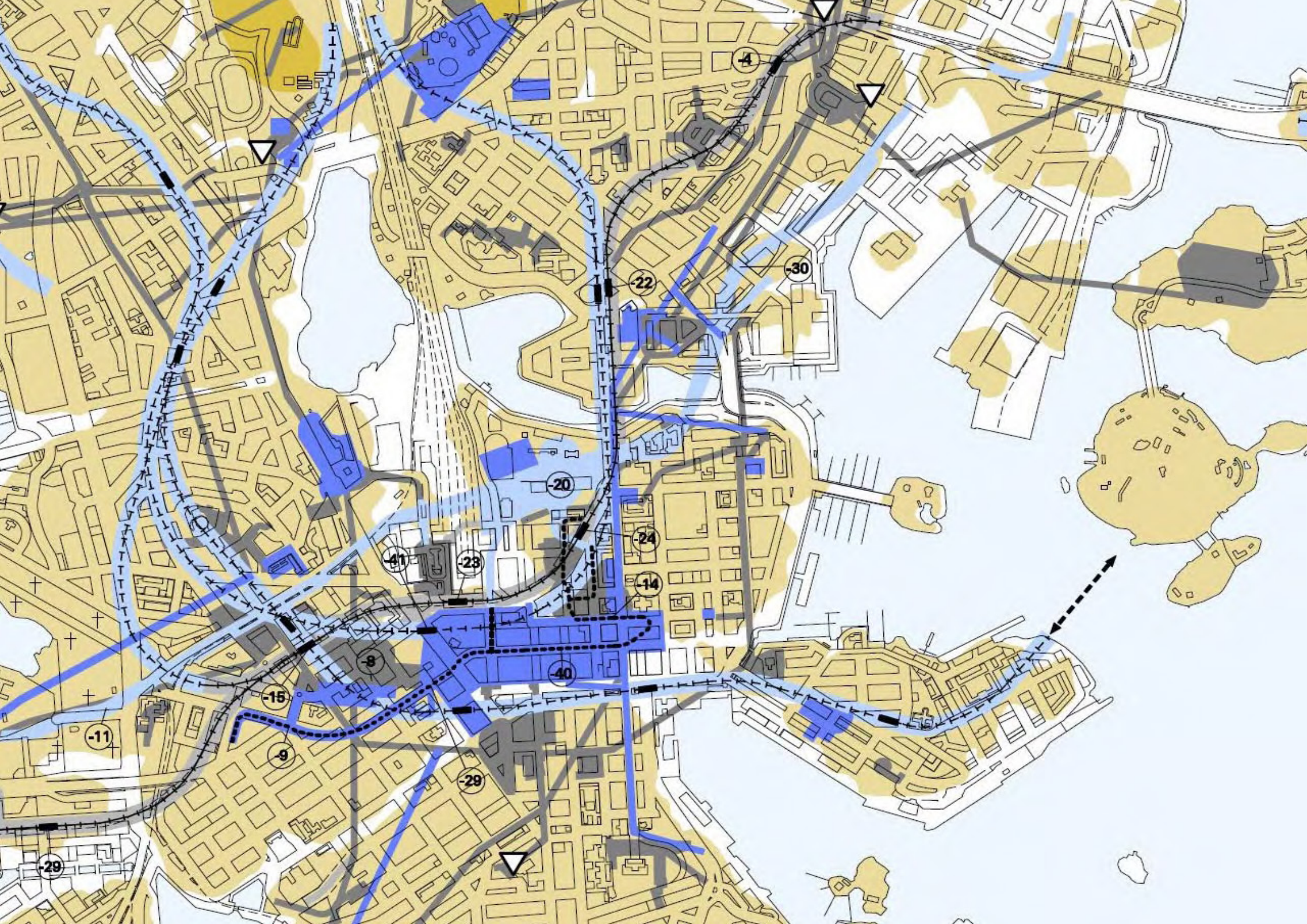
For manufacturing, it can be M1 (least impact on surrounding areas), M2, or M3 (most impact).

Find out more on page 42.

The third character means this zone has additional requirements to make it "contextual," which means to make sure that new buildings have similar size, shape, or look to existing buildings in that zone.

This can be A, B, D, or X.

Find out more on page 70.





PARUFAMET

„Metropolis“







CITY HALL















Underground Urbanism

A London Fusion Design Innovation Award

Report on

The potential re-use of Crossrail grout shafts



Royal College of Art

**THE HELEN HAMLYN
CENTRE FOR DESIGN**

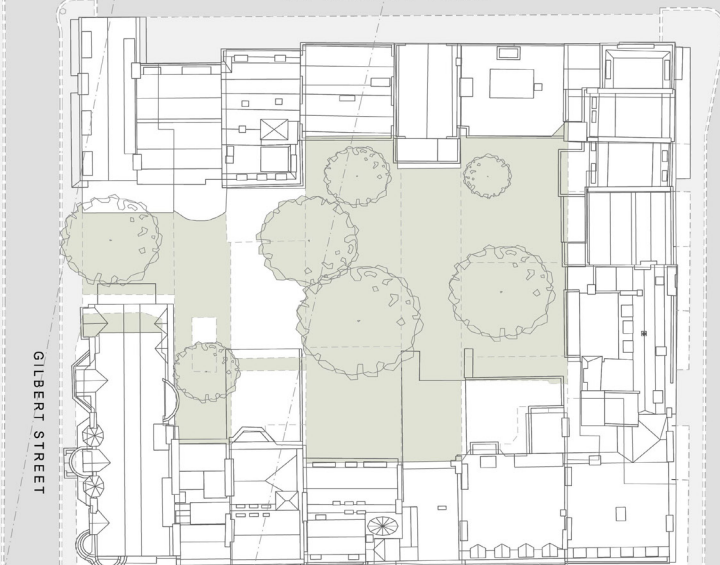
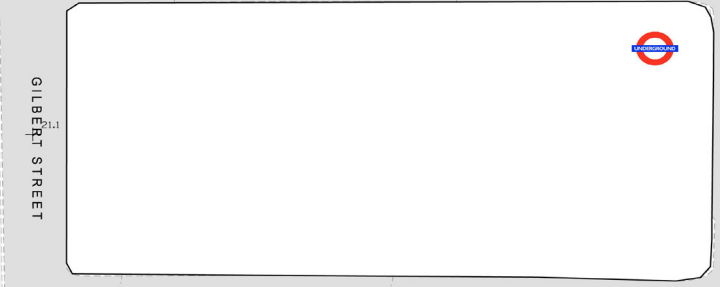
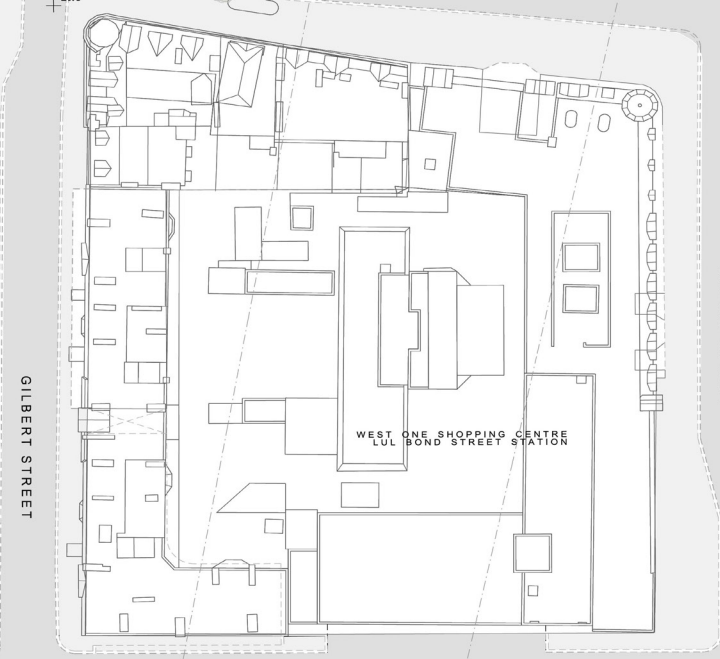
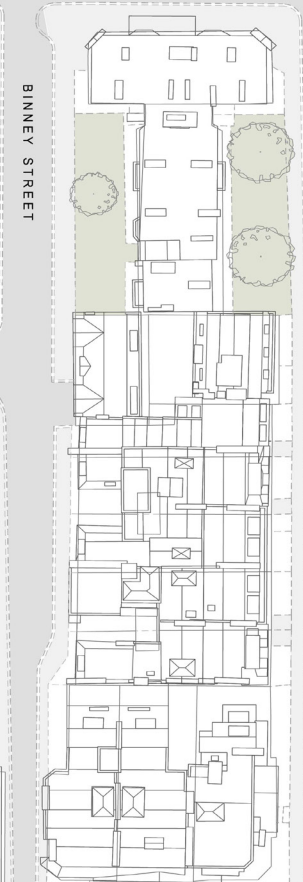
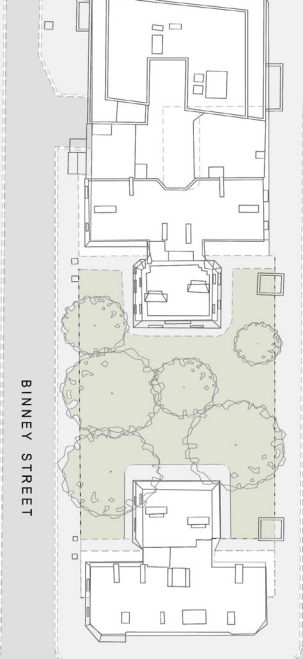


LONDON
FUSION
creative & digital collaboration

urban









ANTIQUE MARKET

grays

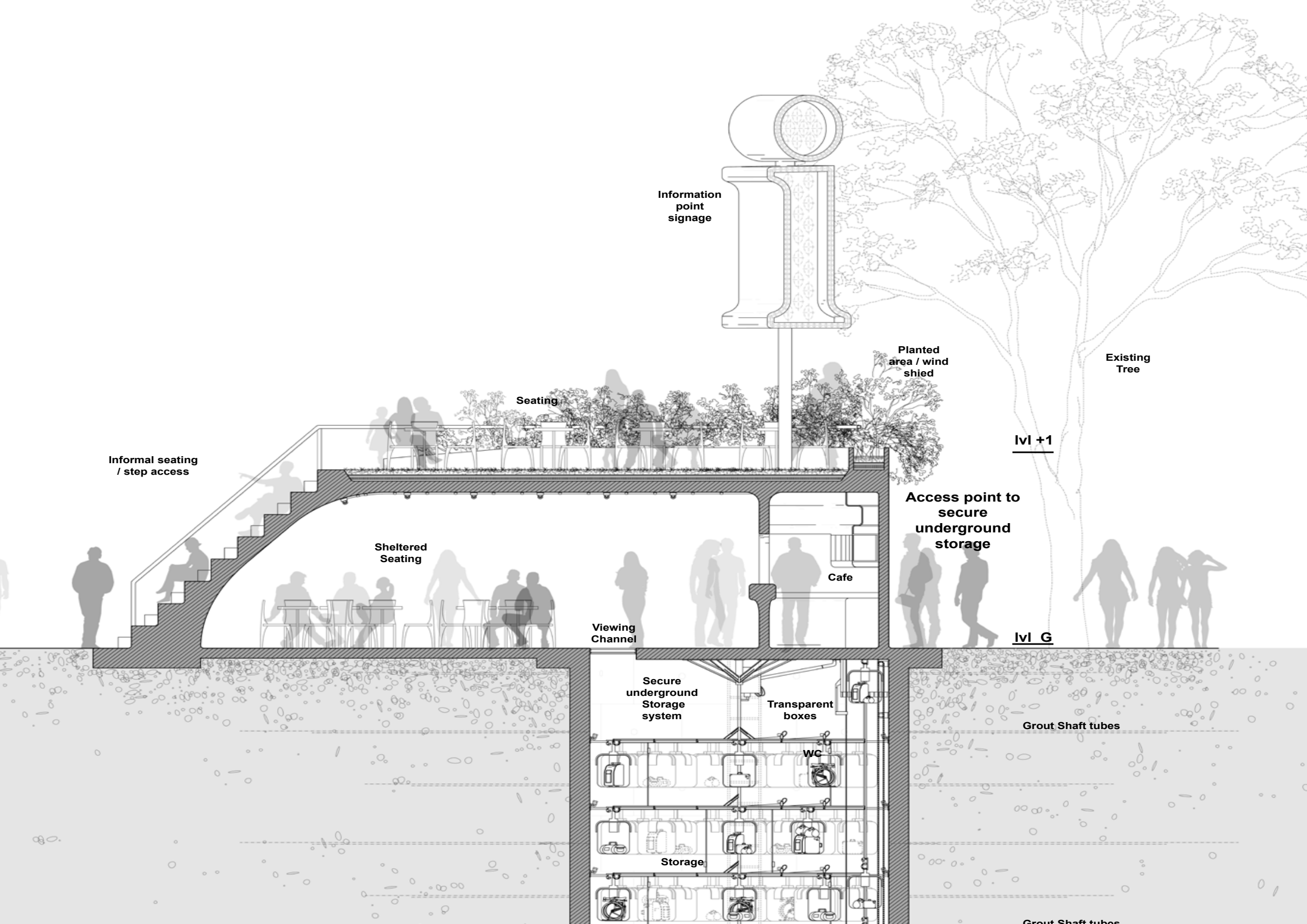
grays OPEN AS USUAL

Browns

200 ANTIQUE DEALERS
grays

200 ANTIQUE DEALERS

OPEN FOR BUSINESS & VISUAL
grays mews
MAN



Information point signage

Planted area / wind shield

Existing Tree

Ivl +1

Access point to secure underground storage

Ivl G

Informal seating / step access

Seating

Sheltered Seating

Cafe

Viewing Channel

Secure underground Storage system

Transparent boxes

WC

Storage

Grout Shaft tubes

Grout Shaft tubes

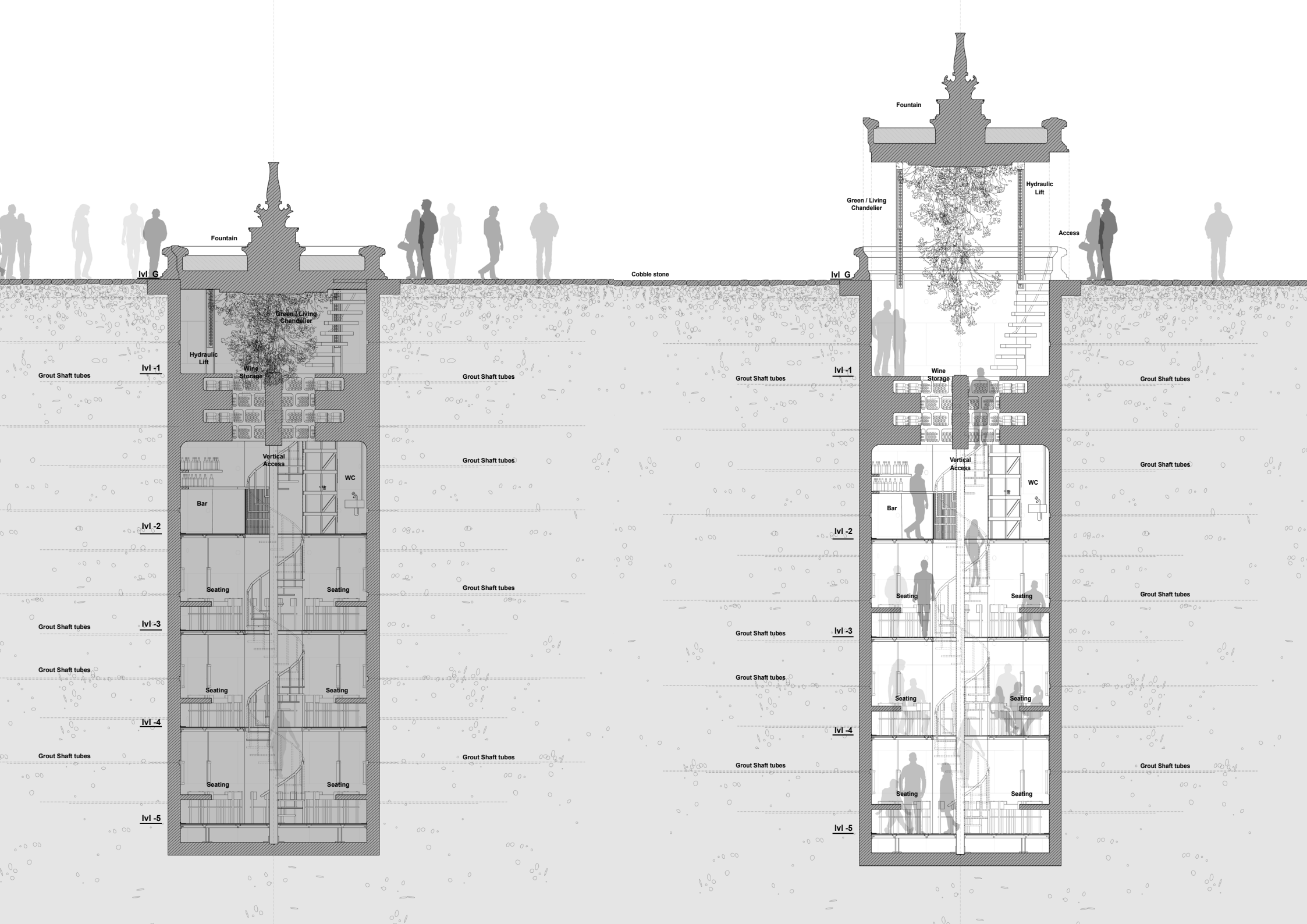
informa
& dropoff





grays
300 MARKET STREET

ROAD CLOSED
BKF



lvi G

Fountain

Green / Living Chandelier

Hydraulic Lift

Wine Storage

Vertical Access

WC

Bar

lvi -2

Seating

Seating

lvi -3

Seating

Seating

lvi -4

Seating

Seating

lvi -5

Cobble stone

lvi G

Fountain

Green / Living Chandelier

Hydraulic Lift

Access

Wine Storage

Vertical Access

WC

Bar

lvi -2

Seating

Seating

lvi -3

Seating

Seating

lvi -4

Seating

Seating

lvi -5

Grout Shaft tubes

Grout Shaft tubes

Grout Shaft tubes

Grout Shaft tubes

Grout Shaft tubes

Grout Shaft tubes

Grout Shaft tubes

Grout Shaft tubes

Grout Shaft tubes

Grout Shaft tubes

Grout Shaft tubes

Grout Shaft tubes

Grout Shaft tubes

Grout Shaft tubes

Grout Shaft tubes

Grout Shaft tubes

LVL-5

SEATING

LED SCREEN
DIGITAL ART

LIGHTS





Merci pour votre temps. Si vous avez des questions, ou si vous souhaitez poursuivre la discussion s'il vous plaît de rester en contact au: Elizabeth.Reynolds@urbenstudio.com